

GAUI T-10 引擎組(10cc)

引擎分解圖及零件表

引擎規格:

排量：0.56立方英寸 (9.18cc)

實用範圍：2000~18000 RPM

缸徑：23mm

火塞行程：21.80mm

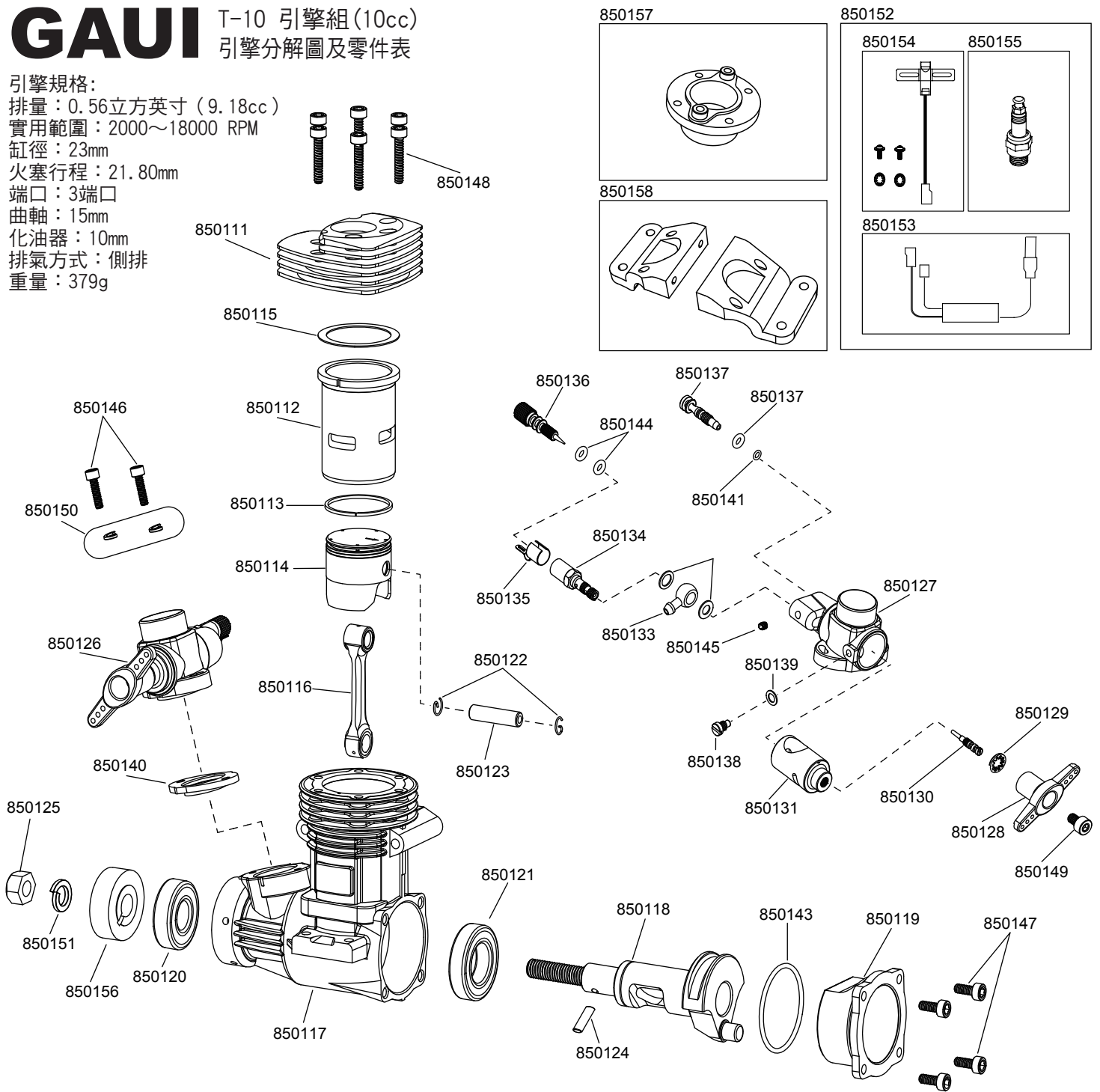
端口：3端口

曲軸：15mm

化油器：10mm

排氣方式：側排

重量：379g



引擎零件		化油器零件		化油器零件		螺絲 / 墊片	
850111	T-10 CNC散熱頭 陽極黑色	850126	化油器全組 (搖桿式)	850134	主油針座	850145	化油器本體螺絲 M3x3mm 1pcs
850112	汽缸套 (ASC Type)	850127	化油器本體	850135	主油針控制彈片	850146	化油器螺絲 M2.6x12mm 2pcs
850113	活塞環	850128	節氣閥搖桿 (Dual 180°)	850136	主油針	850147	後蓋螺絲 M3x8mm 4pcs
850114	活塞 (ASC Type)	850129	防滑墊片 1pcs	850137	導油針	850148	散熱頭螺絲 M3x10mm 6pcs
850115	燃燒室墊片 0.2mm	850130	副油針 1pcs	850138	調節螺絲1pcs	850149	節氣閥螺絲 M4x6mm 1pcs
850116	連桿 (ASC Type)	850131	節氣閥 (搖桿式)	850139	調節螺絲墊片 1pcs	850150	彈簧華司 2.6mm 2pcs
850117	曲軸箱 (黑色)	850132	主油針座墊片 (6.4x9.2x0.5) 2pcs	850140	化油器塑膠墊片	850151	彈簧華司 6.5mm 1pcs
850118	曲軸 (OS)	850133	注油嘴 (6.45mm) 1pcs	CDI 點火系統		飛輪 / 風扇 / 引擎座	
850119	後蓋 (黑色)	O圈		850152	點火系統 CDI套件	850156	驅動輪
850120	前軸承 (9.5x22.2x7mm)	850141	O圈 2.4 x 0.8mm	850153	單缸直管線	850157	T-10 離合器座
850121	後軸承 (15x28x7mm)	850142	O圈 2.9 x 1.78mm	850154	傳導感應線	850158	T-10 引擎固定座
850122	G型扣 (2pcs/set)	850143	O圈 27 x 1.5mm	850155	火星塞 (for T-10)	850159	T-10 油管 (汽油)
850123	活塞止梢 (19x4.985mm)	850144	O圈 2.9 x 1.57mm 2pcs)				
850124	曲軸止梢 (2.5x10mm)						
850125	中心螺帽						

T-10汽油引擎調整

T-10汽油引擎調整&注意事項

安裝:

1. 安裝CDI時需遠離電子產品。
2. 油箱內油管需換成汽油專用油管。
3. CDI紅頭處接電池，黑頭處接感應線。
4. 將點火頭插入火星塞至底，並順時針旋轉點火頭卡緊火星塞，若未確實安裝將會造成電子產品的干擾。
5. 汽油與機油比例 10:1，1000cc 無鉛汽油 對 100cc二行程機油，但可視天氣及引擎情況調整。

引擎磨合:

1. 初始磨合引擎油針:

*主油針鎖到底，退出約1圈又4分之3。

*副油針鎖到底，退出約4圈又4分之1。

2. 3D模式引擎油針(磨合完成):

*主油針鎖到底，退出約1圈又4分之1。

*副油針鎖到底，退出約4圈又4分之1。

實際引擎待速請自行調整。

注意事項:

- (1) 接收機電源請勿與CDI電源共用，安裝CDI時需遠離電子產品。
- (2) 新引擎請先怠速磨合約1000cc燃油，確保高速時運轉順暢，延長引擎壽命。
- (3) 油箱內油管需換成汽油專用油管。
- (4) 不建議使用排氣管回壓方式。
- (5) 燃油混合比例：無鉛汽油10：1 二行程機油。
- (6) 為避免飛行當中出現引擎運轉不順或熄火，建議安裝副油箱及防氣泡重錘。
- (7) 確認點火頭與火星塞安裝確實無鬆脫。

問題排除:

(1) 若遇油門伺服機干擾抖動:

*請調整接收器天線的角度或位置至無干擾現象發生。

*請檢查CDI火星塞點火頭是否鬆脫(按安裝4檢查)。

*安裝CDI本體時需與接收機保持15cm以上。

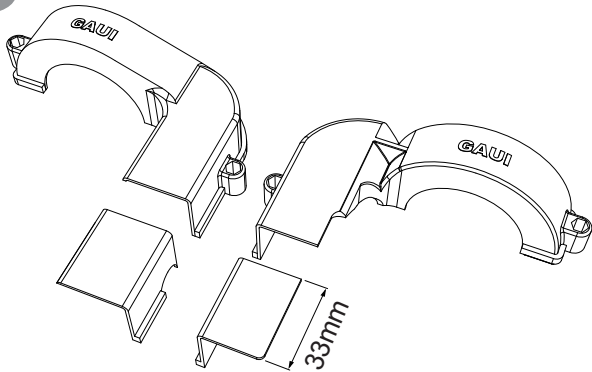
*請檢查CDI各部位線材是否有斷裂或破皮的情形。

(2) 引擎高轉速飛行時，若發生異常轉速降低或轉速明顯忽高忽低。

請先調整油針以排除問題，如無明顯改善請參照(問題排除1)，

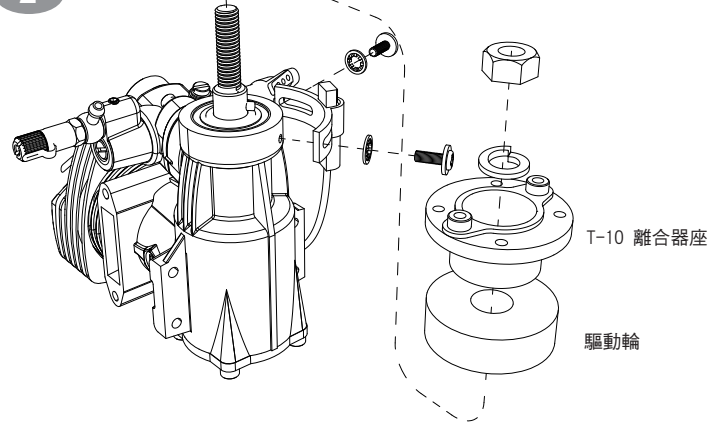
排除油門伺服機受到的干擾。

1



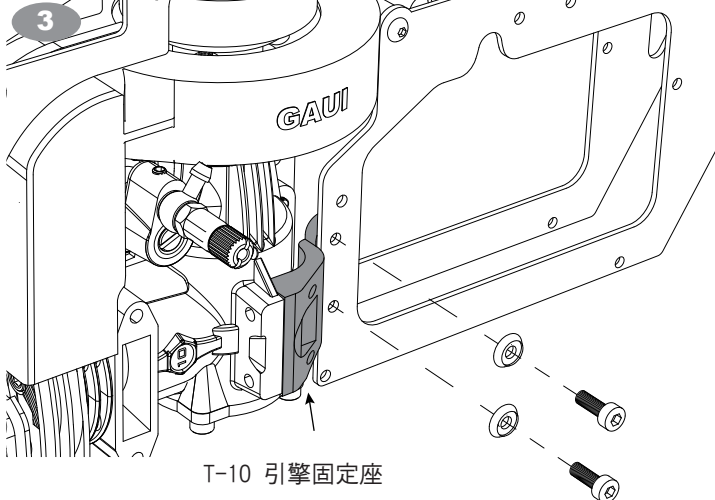
如圖修剪風扇罩下端約33 mm並確認安裝引擎後不干涉。

2



安裝感應線及配合NX4說明書組裝離合器座。

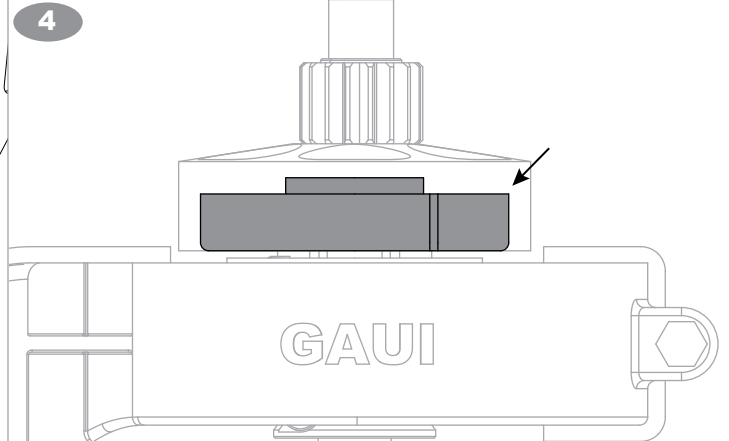
3



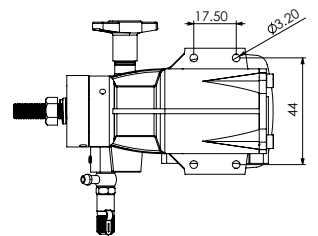
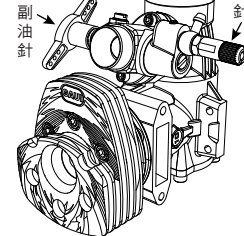
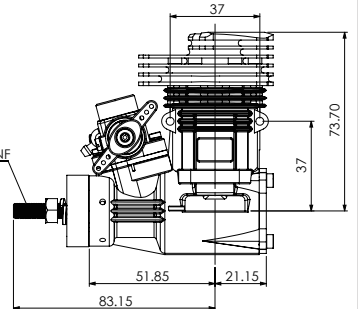
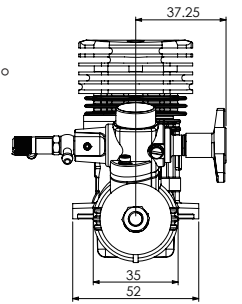
T-10 引擎固定座

配合NX4說明書 P.8 安裝引擎固定座。

4



引擎組裝完成後，請檢查離合器罩轉動是否順暢。

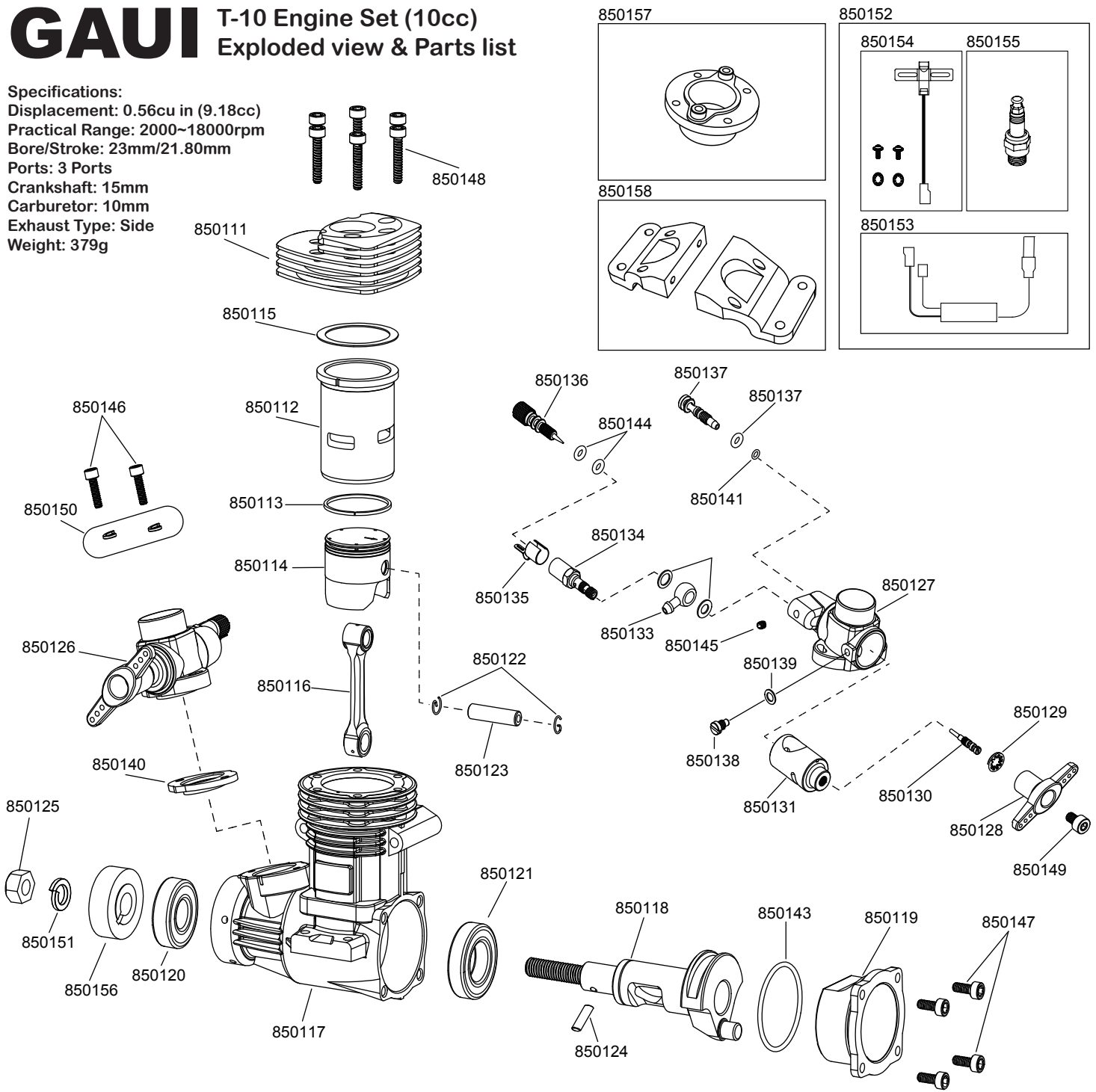


GAUI T-10 Engine Set (10cc)

Exploded view & Parts list

Specifications:

Displacement: 0.56cu in (9.18cc)
 Practical Range: 2000~18000rpm
 Bore/Stroke: 23mm/21.80mm
 Ports: 3 Ports
 Crankshaft: 15mm
 Carburetor: 10mm
 Exhaust Type: Side
 Weight: 379g



(Engine Parts)	(Carburetor Parts)	O-Ring	CDI Ignition System
850111 T-10 CNC Heatsink Head (Black)	850126 Carburetor (Rotary Valve) - Complete	850141 O-Ring 2.4 x 0.8mm Mixture Control Valve	850152 Full CDI Ignition System
850112 Cylinder Sleeve (ASC Type)	850127 Carburetor Main Body	850142 O-Ring 2.9 x 1.78mm Mixture Control Valve	850153 Single Ignition - Straight
850113 Piston Ring	850128 Throttle Servo Horn (Dual 180°)	850143 O-Ring 27 x 1.5mm Cover Plate	850154 Rotation Sensor
850114 Piston (ASC Type)	850129 Anti-Slip Washer (1pcs)	850144 O-Ring 2.9 x 1.57mm(2Pcs) Main Needle	850155 Spark Plug for .56 Gas Heli. Engine
850115 Gasket 0.2mm	850130 Metering Needle (1pcs)	Screw / Washer	(Drive Wheel / Fan / Engine Mount)
850116 Connecting Rod (ASC Type)	850131 Throttle Valve	850145 Carb. Main Needle Plug M3x3mm (1pcs)	850156 Drive Wheel
850117 Crankcase (Black)	850132 Fuel Supply Washer 2Pcs (6.4x9.2x0.5)	850146 Carburetor M2.6 x 12mm (2pcs)	850157 T-10 Clutch mount
850118 Crankshaft (OS Type)	850133 Fuel Nipple 1Pcs (6.45mm)	850147 Cover Plate M3 x 8mm (4pcs)	850158 T-10 Engine mount bracket
850119 Cover Plate (Black)	850134 Main Needle Housing	850148 Heatsink Head M3 x 10mm (6pcs)	850159 T-10 Gasoline fuel line
850120 Front Crankshaft Bearing (9.5x22.2x7mm)	850135 Index Clip For Main Needle	850149 Servo Horn M4 x 6mm (1pcs)	
850121 Rear Crankshaft Bearing (15x28x7mm)	850136 Main Needle	850150 Spring Washer 2.6mm (2pcs)	
850122 G-Clip for Piston Pin (2pcs/set)	850137 Mixture Control Valve	850151 Drive Wheel Washer 6.5mm (1pcs)	
850123 Piston Pin (19x4.985mm)	850138 Throttle Valve Stopper Screw 1Pcs		
850124 Drive Pin (2.5x10mm)	850139 Throttle Stopper Washer 1Pcs		
850125 Crankshaft Lock Nut	850140 Composite Carburetor Gasket		

T-10 Gasoline Engine Adjustment & Notices

Install:

1. The CDI needs to be installed as far as possible from other electronic parts.
2. Please use gasoline fuel tubing in fuel tank.
3. The red wire in CDI connects to battery and black wire connects to sensor.
4. Ignition wire connector needs to be connected to spark plug all the way down and turn clockwise to tighten with the spark plug. Make sure the connection is tight or it may be interfered by other electronic parts.
5. The recommended ratio of gasoline to two-stroke engine oil is 10:1. E.g. 1000 c.c. gasoline mixed with 100 c.c. two-stroke engine oil. The ratio is adjustable depending on the weather and engine working temperature.

Engine Break-In (Needle Valve setting):

1. Open the main (high speed) needle valve 1 and 3/4 turns from the fully closed position.
2. Open the low speed needle valve 4 and 1/4 turns from the fully closed position.

Normal 3D model needle valve setting after Engine break-in:

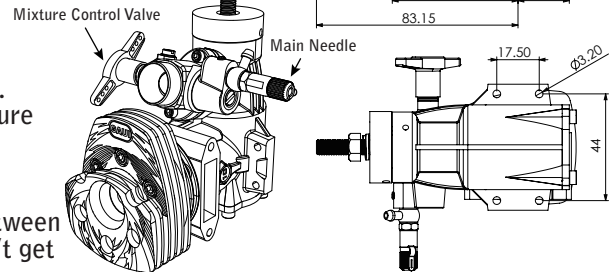
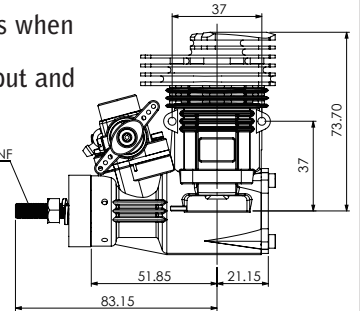
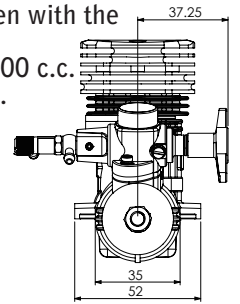
1. Open the main (high speed) needle valve 1 and 1/4 turns from the fully closed position.
2. Open the low speed needle valve 4 and 1/4 turns from the fully closed position. Please adjust proper idle speed in the device.

Notices

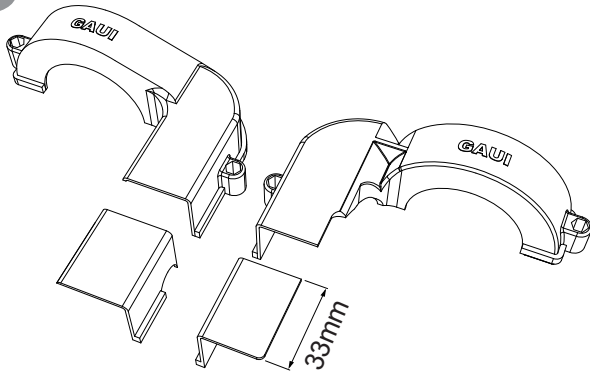
1. Use independent Power sources for receiver and CDI. Keep CDI away from other electronic parts when installing.
2. Please break-in new engine using at least 1000cc at idle speed to achieves maximum power output and extends engine life.
3. Please use gasoline fuel tubing in fuel tank.
4. Exhaust back pressure method is not recommended.
5. Fuel mixture Ratio: 10:1. 10parts gasoline & 1part two-stroke engine oil
6. Auxiliary fuel tank and non-bubble weight are recommended in fuel system to prevent engine stop. When air get into fuel tubing it will affect engine performance.
7. Make sure ignition wire and spark plug are tightened together. & not loose

Troubleshooting

1. If throttle servo is shaking or interfered:
 - * Please adjust the angle of receiver antenna to reduce the interference.
 - * Please check the CDI ignition wire and spark plug connection. Make sure they are all tightening together. (Install Step 4)
 - * Please make sure CDI is away from receiver at least 15cm.
 - * Please check wire surface and condition on CDI.
2. If the engine rotational speed changes very rapidly (slow) or jump between fast and slow, please refer to troubleshooting 1. If the situation doesn't get better, please check the throttle servo's for interference.

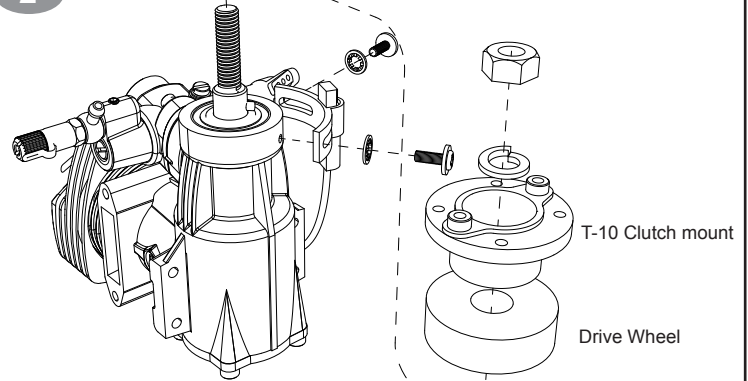


1



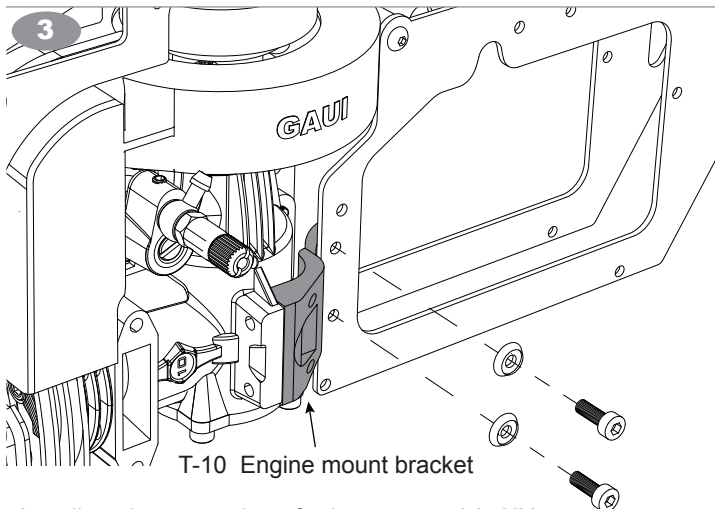
Trim the fan shroud by 33mm as illustration shows and makes sure it does not interfere after installing the engine.

2



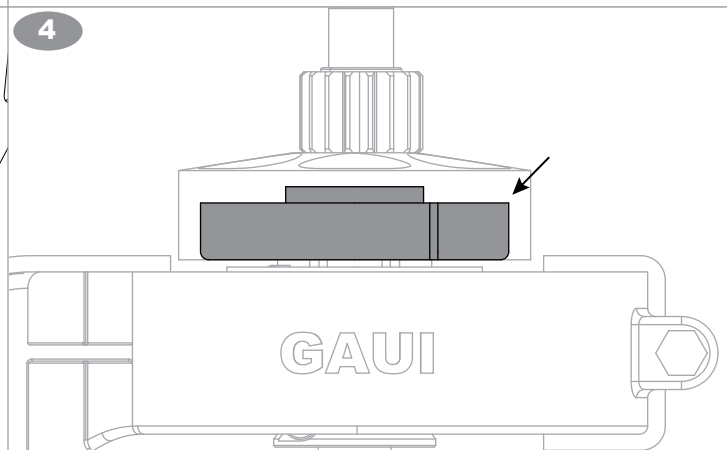
Install sensor as shown and install clutch mount by referring to NX4 instruction manual.

3



Install engine mount by referring to page 8 in NX4 instruction manual.

4



After finishing installment of engine. Please manually check the clutch bell is operating smoothly.