

GAU T-10 Engine Set (10cc)

Exploded view & Parts list

Specifications:

Displacement: 0.56cu in (9.18cc)

Practical Range: 2000~18000rpm

Bore/Stroke: 23mm/21.80mm

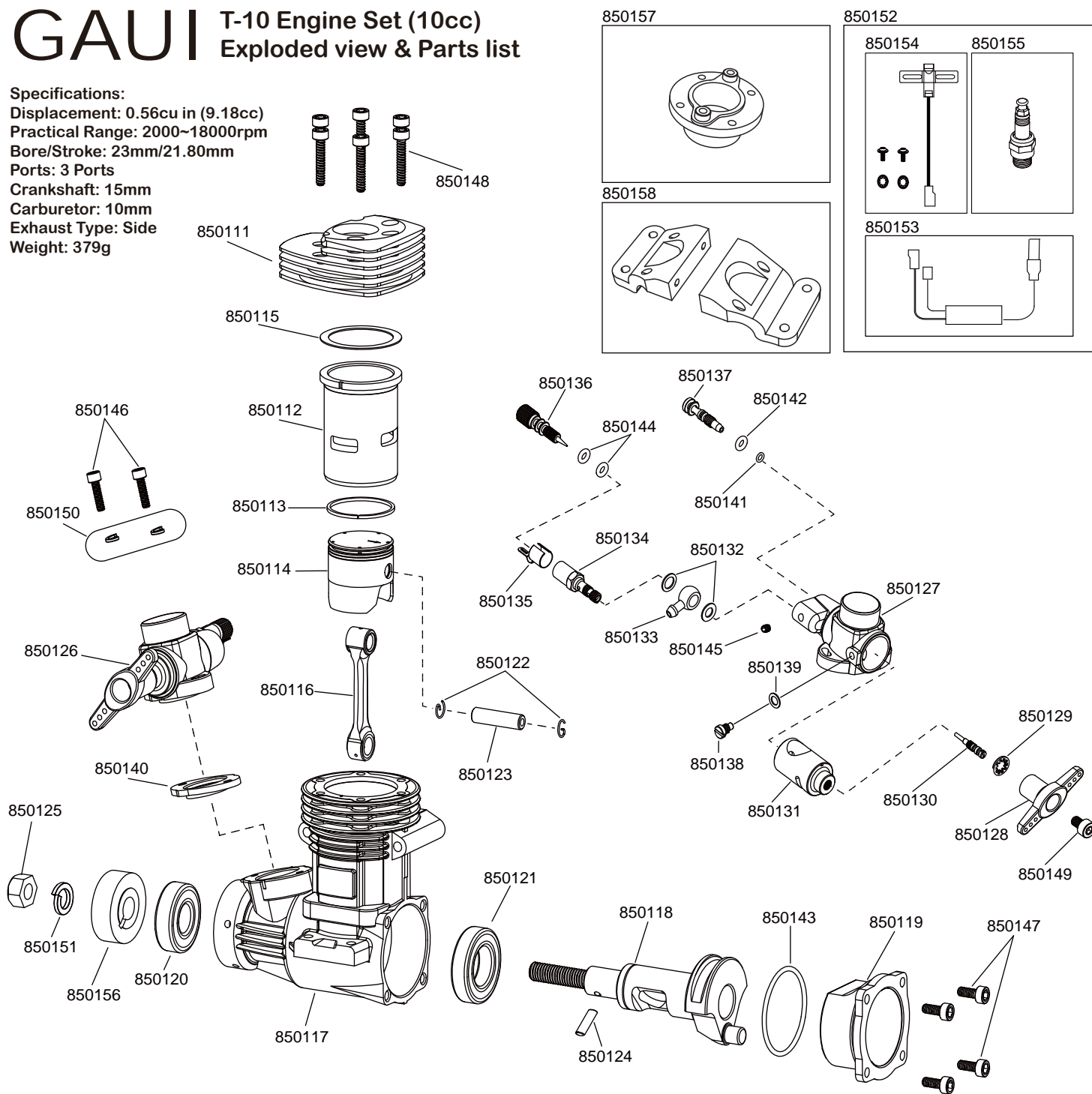
Ports: 3 Ports

Crankshaft: 15mm

Carburetor: 10mm

Exhaust Type: Side

Weight: 379g



(Engine Parts)		(Carburetor Parts)		O-Ring		CDI Ignition System	
850111	T-10 CNC Heatsink Head (Black)	850126	Carburetor (Rotary Valve) - Complete	850141	O-Ring 2.4 x 0.8mm Mixture Control Valve	850152	Full CDI Ignition System
850112	Cylinder Sleeve (ASC Type)	850127	Carburetor Main Body	850142	O-Ring 2.9 x 1.78mm Mixture Control Valve	850153	Single Ignition - Straight
850113	Piston Ring	850128	Throttle Servo Horn (Dual 180°)	850143	O-Ring 27 x 1.5mm Cover Plate	850154	Rotation Sensor
850114	Piston (ASC Type)	850129	Anti-Slip Washer (1pcs)	850144	O-Ring 2.9 x 1.57mm(2Pcs) Main Needle	850155	Spark Plug for .56 Gas Heli. Engine
850115	Gasket 0.2mm	850130	Metering Needle (1pcs)		Screw / Washer		(Drive Wheel / Fan / Engine Mount)
850116	Connecting Rod (ASC Type)	850131	Throttle Valve	850145	Carb. Main Needle Plug M3x3mm (1pcs)	850156	Drive Wheel
850117	Crankcase (Black)	850132	Fuel Supply Washer 2Pcs (6.4x9.2x0.5)	850146	Carburetor M2.6 x 12mm (2pcs)	850157	T-10 Clutch mount
850118	Crankshaft (OS Type)	850133	Fuel Nipple 1Pcs (6.45mm)	850147	Cover Plate M3 x 8mm (4pcs)	850158	T-10 Engine mount bracket
850119	Cover Plate (Black)	850134	Main Needle Housing	850148	Heatsink Head M3 x 14mm (6pcs)	850159	T-10 Gasoline fuel line
850120	Front Crankshaft Bearing (9.5x22.2x7mm)	850135	Index Clip For Main Needle	850149	Servo Horn M4 x 6mm (1pcs)		
850121	Rear Crankshaft Bearing (15x28x7mm)	850136	Main Needle	850150	Spring Washer 2.6mm (2pcs)		
850122	G-Clip for Pinston Pin (2pcs/set)	850137	Mixture Control Valve	850151	Drive Wheel Washer 6.5mm (1pcs)		
850123	Piston Pin (19x4.985mm)	850138	Throttle Valve Stopper Screw 1Pcs				
850124	Drive Pin (2.5x10mm)	850139	Throttle Stopper Washer 1Pcs				
850125	Crankshaft Lock Nut	850140	Composite Carburetor Gasket				

T-10 Gasoline Engine Adjustment & Notices

Install:

1. The CDI needs to be installed as far as possible from other electronic parts.
2. Please use gasoline fuel tubing in fuel tank.
3. The red wire in CDI connects to battery and black wire connects to sensor.
4. Ignition wire connector needs to be connected to spark plug all the way down and turn clockwise to tighten with the spark plug. Make sure the connection is tight or it may be interfered by other electronic parts.
5. The recommended ratio of gasoline to two-stroke engine oil is **3:1**. E.g. **300** c.c. gasoline mixed with 100 c.c. two-stroke engine oil. The ratio is adjustable depending on the weather and engine working temperature.

Engine Break-In (Needle Valve setting):

1. Open the main (high speed) needle valve **1** and **1/4** turns from the fully closed position.
2. Open the low speed needle valve 4 and 1/4 turns from the fully closed position.

Normal 3D model needle valve setting after Engine break-in:

1. Open the main (high speed) needle valve **3/4** turns from the fully closed position.
2. Open the low speed needle valve 4 and 1/4 turns from the fully closed position. Please adjust proper idle speed in the device.

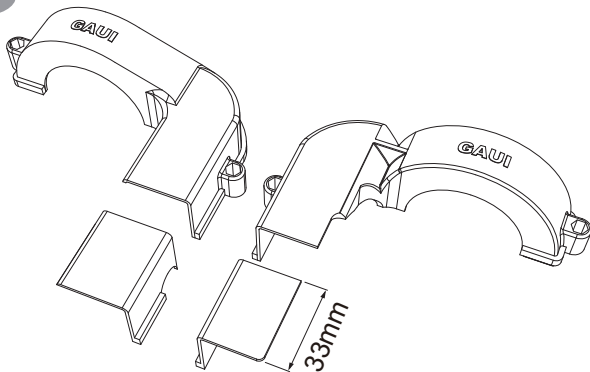
Notices

1. Use independent Power sources for receiver and CDI. Keep CDI away from other electronic parts when installing.
2. Please break-in new engine using at least 1000cc at idle speed to achieves maximum power output and extends engine life.
3. Please use gasoline fuel tubing in fuel tank.
4. Exhaust back pressure method is not recommended.
5. Fuel mixture Ratio: **3:1**. 10parts gasoline & 1part two-stroke engine oil
6. Auxiliary fuel tank and non-bubble weight are recommended in fuel system to prevent engine stop. When air get into fuel tubing it will affect engine performance.
7. Make sure ignition wire and spark plug are tightened together. & not loose

Troubleshooting

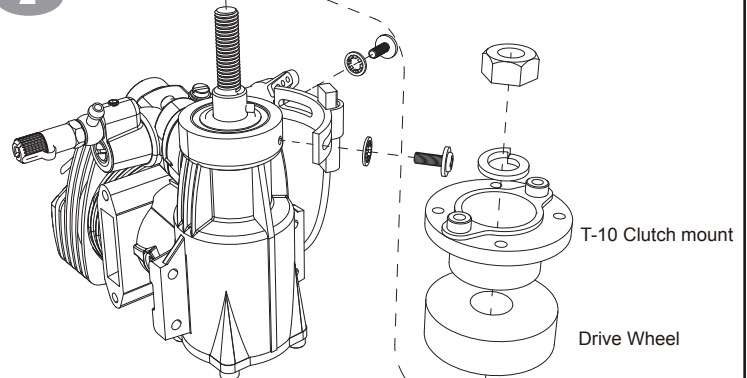
1. If throttle servo is shaking or interfered:
 - * Please adjust the angle of receiver antenna to reduce the interference.
 - * Please check the CDI ignition wire and spark plug connection. Make sure they are all tightening together. (Install Step 4)
 - * Please make sure CDI is away from receiver at least 15cm.
 - * Please check wire surface and condition on CDI.
2. If the engine rotational speed changes very rapidly (slow) or jump between fast and slow, please refer to troubleshooting 1. If the situation doesn't get better, please check the throttle servo's for interference.

1



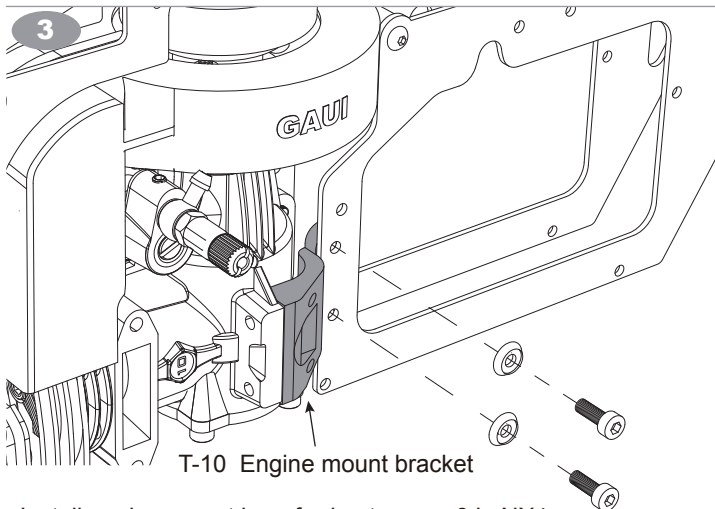
Trim the fan shroud by 33mm as illustration shows and makes sure it does not interfere after installing the engine.

2



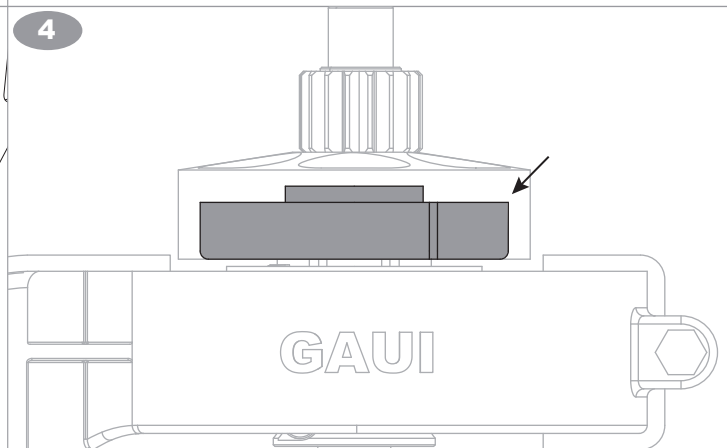
Install sensor as shown and install clutch mount by referring to NX4 instruction manual.

3

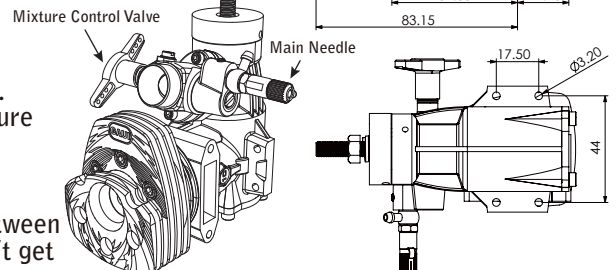
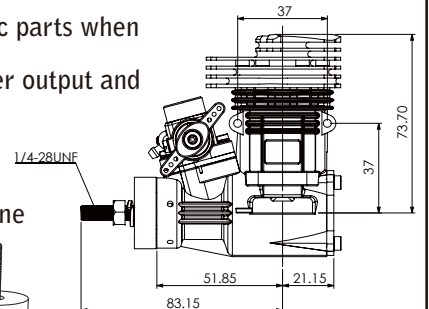
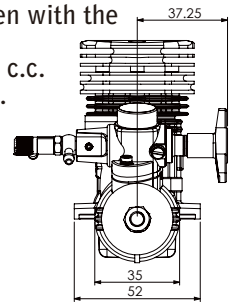


Install engine mount by referring to page 8 in NX4 instruction manual.

4



After finishing installment of engine. Please manually check the clutch bell is operating smoothly.



GAUL T-10 引擎組(10cc)

引擎分解圖及零件表

引擎規格:

排量: 0.56立方英寸 (9.18cc)

實用範圍: 2000~18000 RPM

缸徑: 23mm

火塞行程: 21.80mm

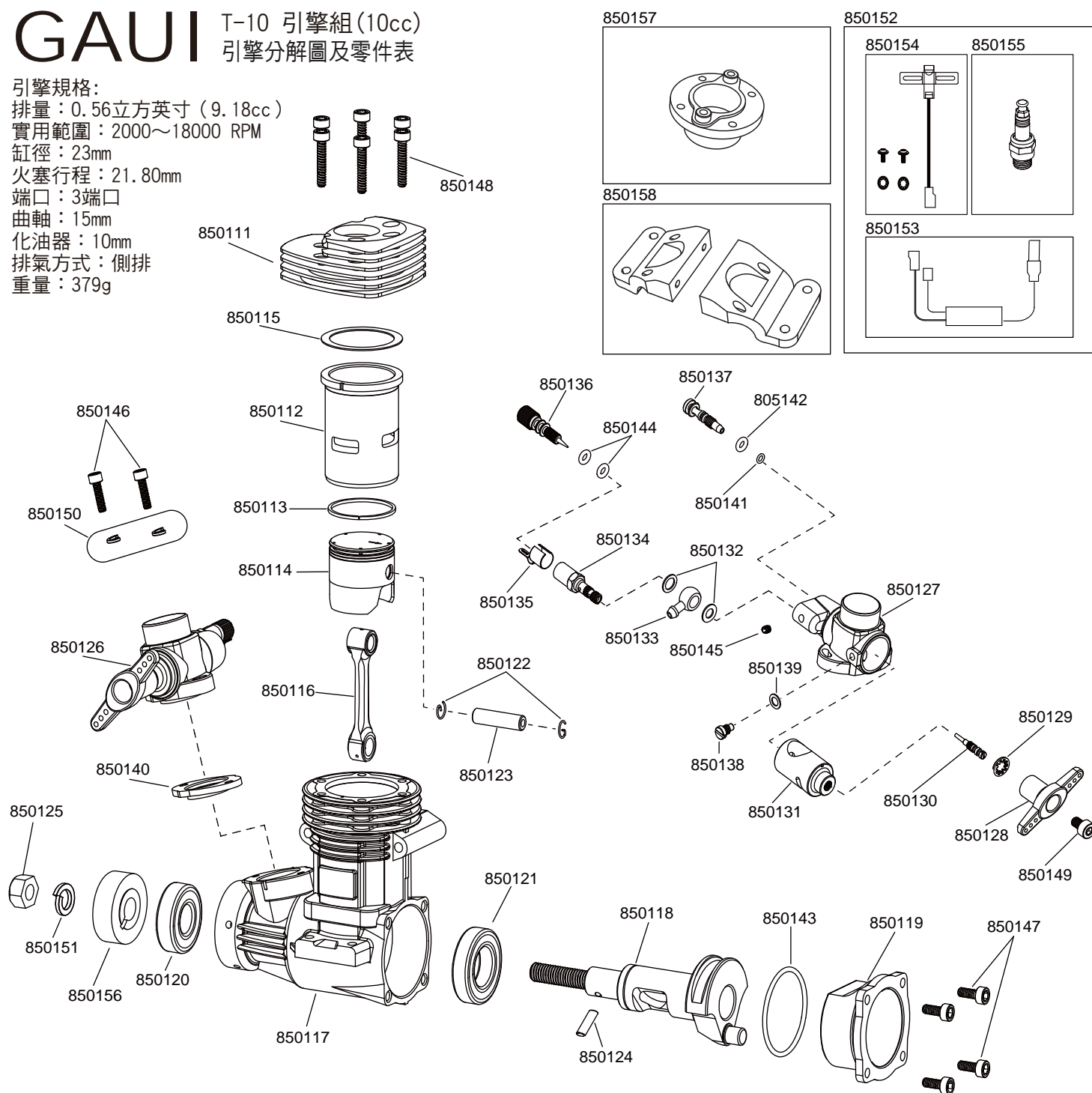
端口: 3端口

曲軸: 15mm

化油器: 10mm

排氣方式: 側排

重量: 379g



引擎零件	化油器零件	化油器零件	螺絲 / 墊片
850111 T-10 CNC散熱頭 陽極黑色	850126 化油器全組 (搖桿式)	850134 主油針座	850145 化油器本體螺絲 M3x3mm 1pcs
850112 汽缸套 (ASC Type)	850127 化油器本體	850135 主油針控制彈片	850146 化油器螺絲 M2.6x12mm 2pcs
850113 活塞環	850128 節氣閥搖桿 (Dual 180°)	850136 主油針	850147 後蓋螺絲 M3x8mm 4pcs
850114 活塞 (ASC Type)	850129 防滑墊片 1pcs	850137 導油針	850148 散熱頭螺絲 M3x14mm 6pcs
850115 燃燒室墊片 0.2mm	850130 副油針 1pcs	850138 調節螺絲1pcs	850149 節氣閥螺絲 M4x6mm 1pcs
850116 連桿 (ASC Type)	850131 節氣閥 (搖桿式)	850139 調節螺絲墊片 1pcs	850150 彈簧華司 2.6mm 2pcs
850117 曲軸箱 (黑色)	850132 主油針座墊片 (6.4x9.2x0.5) 2pcs	850140 化油器塑膠墊片	850151 彈簧華司 6.5mm 1pcs
850118 曲軸 (OS)	850133 注油嘴 (6.45mm) 1pcs	CDI 點火系統	飛輪 / 風扇 / 引擎座
850119 後蓋 (黑色)	0圈	850152 點火系統 CDI套件	850156 驅動輪
850120 前軸承 (9.5x22.2x7mm)	850141 0圈 2.4 x 0.8mm	850153 單缸直管線	850157 T-10 離合器座
850121 後軸承 (15x28x7mm)	850142 0圈 2.9 x 1.78mm	850154 傳導感應線	850158 T-10 引擎固定座
850122 G型扣 (2pcs/set)	850143 0圈 27 x 1.5mm	850155 火星塞 (for T-10)	850159 T-10 油管 (汽油)
850123 活塞止梢 (19x4.985mm)	850144 0圈 2.9 x 1.57mm 2pcs)		
850124 曲軸止梢 (2.5x10mm)			
850125 中心螺帽			

T-10汽油引擎調整

T-10汽油引擎調整&注意事項

安裝：

1. 安裝CDI時需遠離電子產品。
2. 油箱內油管需換成汽油專用油管。
3. CDI紅頭處接電池，黑頭處接感應線。
4. 將點火頭插入火星塞至底，並順時針旋轉點火頭卡緊火星塞，若未確實安裝將會造成電子產品的干擾。
5. 汽油與機油比例 **3:1**，1000cc 無鉛汽油 對**300** cc二行程機油，但可視天氣及引擎情況調整。

引擎磨合：

1. 初始磨合引擎油針：

*主油針鎖到底，退出約**1圈又4分之1**。

*副油針鎖到底，退出約4圈又4分之1。

2. 3D模式引擎油針（磨合完成）：

*主油針鎖到底，退出約 **4分之3** 圈。

*副油針鎖到底，退出約4圈又4分之1。

實際引擎待速請自行調整。

注意事項：

- (1) 接收機電源請勿與CDI電源共用，安裝CDI時需遠離電子產品。
- (2) 新引擎請先怠速磨合約1000cc燃油，確保高速時運轉順暢，延長引擎壽命。
- (3) 油箱內油管需換成汽油專用油管。
- (4) 不建議使用排氣管回壓方式。
- (5) 燃油混合比例：無鉛汽油 **3:1** 二行程機油。
- (6) 為避免飛行當中出現引擎運轉不順或熄火，建議安裝副油箱及防氣泡重錘。
- (7) 確認點火頭與火星塞安裝確實無鬆脫。

問題排除：

(1) 若遇油門伺服機干擾抖動：

*請調整接收器天線的角度或位置至無干擾現象發生。

*請檢查CDI火星塞點火頭是否鬆脫(按安裝4檢查)。

*安裝CDI本體時需與接收機保持15cm以上。

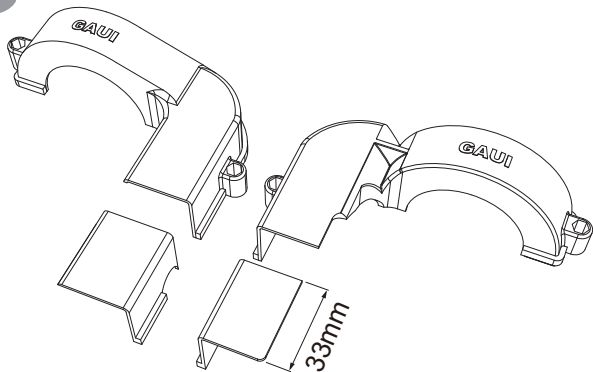
*請檢查CDI各部位線材是否有斷裂或破皮的情形。

(2) 引擎高轉速飛行時，若發生異常轉速降低或轉速明顯忽高忽低。

請先調整油針以排除問題，如無明顯改善請參照(問題排除1)，

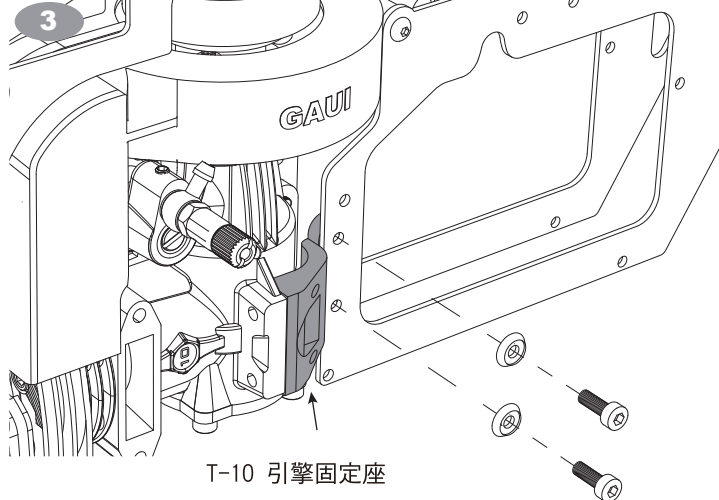
排除油門伺服機受到的干擾。

1



如圖修剪風扇罩下端約33 mm並確認安裝引擎後不干涉。

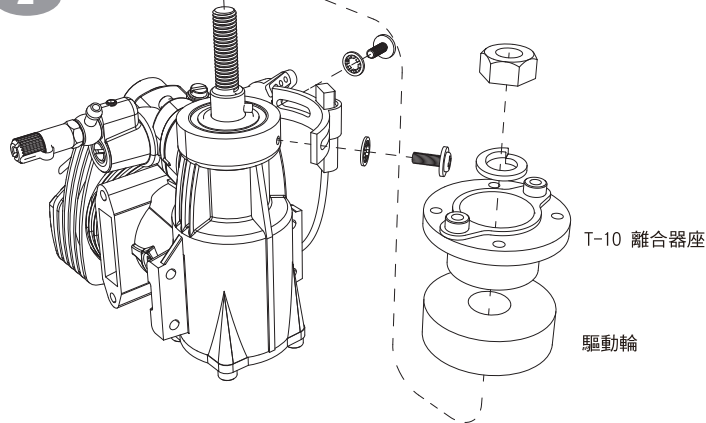
3



T-10 引擎固定座

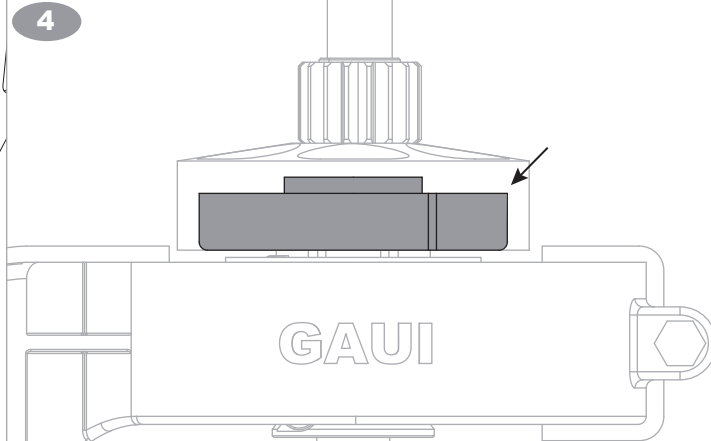
配合NX4說明書 P. 8 安裝引擎固定座。

2

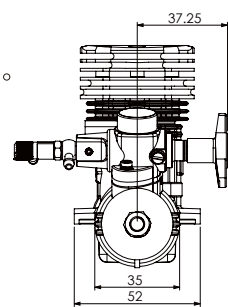


安裝感應線及配合NX4說明書組裝離合器座。

4



引擎組裝完成後，請檢查離合器罩轉動是否順暢。



1/4-28UNF

(導)
副油針

主油針

驅動輪

T-10 離合器座